

Kratzer Woodworking Liquidation & Consignment Auction

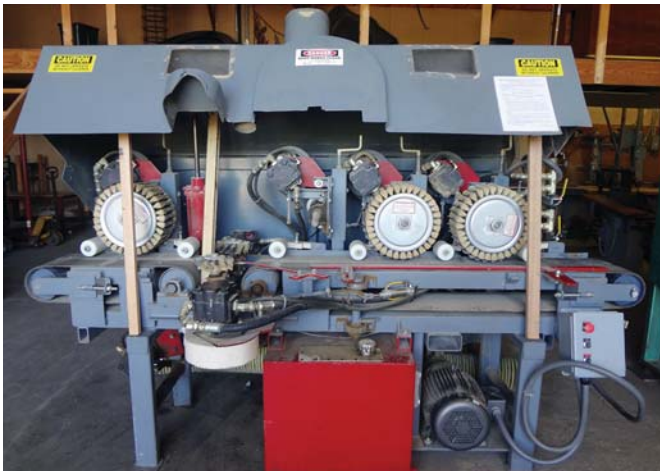
Friday, August 12, 2016 • Starting at 10:00AM • Tractors Sell at Approximately 12:30PM

**Absolute
Auction**

INDUSTRIAL WOODWORKING EQUIPMENT / LUMBER / ANTIQUE TRACTORS

BidSpotter.com

Selling on site at: 12980 Arnold Rd, Dalton, OH 44618



WOODWORKING EQUIPMENT: Sanding Master 52" 2-Head Sander, Model #SCSB2-1300 (1st Head Rubber Drum, 2nd Head Finishing Platinum); Timesavers 3-Head Wide Belt Sander, Model 352 3 (1st Head Steel Drum, 2nd Head Rubber Drum, 3rd Head Finishing Platinum: 460V, 3-Phase); Taylor 30-Section Clamp Carrier, 36" Clamps with 6 Clamps per Section, with Pneumatic Tightener; Taylor 60-Section Clamp Carrier, 36" Clamps with 6 Clamps per Section, 8' Wide, with Pneumatic Clamp Tightener; F45 Altondurg Sliding Table Saw; Cantek SRS-12 Straight Line Ripsaw; Northfield #8HH 30" Spiral Head Planer; Cantek A-2560 25" x 60" Wide Belt Sander with Platinum; 6-Head Molding Sander (Hydraulic), Powered by 15HP Baldor Elec. Motor, Made by Stutzman Manufacturing (230/460V, 3-Phase); SCMI 5' Sliding Table Saw; Blower with Cyclone Dust Bin (Off Site); Delta RT-40 12" Heavy Duty Table Saw; Delta 10" Unisaw with 52" Rip Fence; Maggi 3-Wheel Power Feeder; Delta Table Saw with 32" Fence (110V, 1 Phase); Rockwell 1/2" Shaper (3HP, 230V, 1-Phase); Wesflex Plaque Pattern-Cutting Machine with Patterns; Visionary Upcut Saw / Belt Drive; 10' Roller Conveyor; Quick Conveyorized Glue Spreader for Panel Shop (220V); Bench Top Glue Spreader with Elec. Motor (110V); Delta 43-155 Pin Router; Dayton 15HP 3-Phase Elec. Motor, 1770 RPM; Elektrimax 40HP Elec. Motor, 3550 RPM; Delta 10" Unisaw with 52" Rip Fence; Power Feeder, 3 Wheel; Whirlwind Model #700 Ser #289748 Profile Sander with Extra Heads; Gannomat Selektta 252 Dowel Machine; Win-smith 12" Jointer, Straight Knife, Heavy Duty; Conveyor: 42" x 16', Variable Speed, Good Condition; Taylor 28-Section Clamp Carrier, Disassembled on Skids: 32" Clamps, 6 Clamps per Section; Ritter 6' x 4' Face Frame Clamp; Edge Sander 6" x 54" Elec. Motor (110V/220V, 3-Phase); Delta #22-540 12" Planer, 110V; Kreg Face Frame Table, Pneumatic; 2 JLT Door Clamps, PLA04, Pneumatic; Delta 10" Tablesaw with 29" Side Table, Good Condition; Angle Gauge/Guide for Table Saw; 3-Wheel Power Feeder, 220V, 3-Phase; Chicago Power Tools Drill Press, 5/8 Chuck, 110V, 1-Phase; Rockwell Grinder/Sharpener, 110V; Cus-tom-Made 55-Gallon Barrel Holder (Swivels); Rockwell 14" Bandsaw (230V, 3-Phase); U.S. Industrial 14" Band Saw (110V, 1-Phase); Drum Sander/Flap Sander Combo (110V, 1-Phase); Craftsman Scroll Saw (110V, 1-Phase); Jet Single Bag Dust Collector (2-HP,

110V, 1-Phase); 7" x 180" Edge Sander (3HP, 220V, 1-Phase); Custom-Built Cutoff/ Swing Saw with Fence and Conveyors (220V, 1-Phase); Champion Drill Press, 5/8 Chuck (110V, 1-Phase); Delta 43/340 3/4" Spindle Shaper (110V, 1-Phase); Jet JJ 6CS 6" Jointer, 46" Long Bed (3 / 4 HP, 115V, 1-Phase); Delta 14" Band Saw #52-477, Excellent Condition (115V, 1-Phase); Clark Forklift with Solid Tires, Runs, Lifting Capacity Approx. 3,000 Lb.; Toyota 8,000 Lb. Forklift – Just Serviced, Everything Works Great; Model 7FGU35 Forklift Serial #61052 w/9700 hrs.

HAND AND POWER TOOLS: Approximately 75 Pony Clamps, "Little Mister" Air Humidifier, Hitachi 10" Table Saw, Porta-Cable 10" Table Saw, Airy 18-Gauge Brad Nailer; Senco Finish Nailer; Bosch Electric Jigsaw; Porta Cable Hand Planer, Electric; DeWalt 12" Chop Saw; 2 10" Makita Chop Saws; Porta-Cable 3x21 Belt Sander; Craftsman Dovetailer; DeWalt 1/2" Router; Craftsman 18-Gauge Brad Nailer; Hitachi Belt Sander; Milwaukee Angle Drill; DeWalt 18-Volt Impact and Drill; Makita 18-Volt Drill & Im-pact; Skill Circular Saw Stihl TS760 Concrete Saw with Stand and Water Tank; Stihl 038 Chain Saw; Paslode Framing Nailer; DeWalt Hammer Drill; Duofast Construction Stapler; Stanley Levels; Hitachi Framing Nailers; CST Berger Transit, Part No. M253639; Ridgid Roofing Nailer; Ridgid Job Site Safety Storage Box; and lots more miscellaneous hand tools.

ANTIQUES: 12' Wide Wooden Seeder, Walk-Behind; Corn Sheller, No. 20; Antique Wooden Lathe; Anderson Bench Mount Drill Machine; Butter Churn; Two Sausage Stuffers; Yankee Drills; Bottle Capper; Ironing Board; Wooden Desk; Big Wooden Grain Sorter; Log Pick; Wood-en Tool Boxes; Hand Planes; Milk Can; Kerosene Lanterns; Old Wooden Crib; Wooden Hame; Meat Grinder; Little Wooden Wagon; Seeder; Stanley Miter Box; Glass Jars; Pitchers, Pots, and Pans.

MISCELLANEOUS: Automan AE9 Horizontal Air Compressor, 80 Gallon, Approx. 10HP with Speedaire After Cooler; Speedaire 5HP Vertical Air Compressor, 80-Gallon Tank; 5HP Vertical Air Compressor, 80-Gallon Tank; Miller 110V Wire Welder; Lincoln #200 Wire Welder; Wooden Carts; Pallet Jacks; Heavy Build Pallets; Space Heater; Fireproof Garage Doors; Hydraulic Dump Trailer; ARE Truck Cab, White, 3/4-Ton Standard Bed.

TERMS: Cash, Good Check or VISA/MC (credit cards subject to additional 3% charge) • 5% Buyers Premium

**Bidding for Machinery & Tractors
available on line at BidSpotter.com.**

BidSpotter.com

Troyer
AUCTION SERVICES LTD.

Specializing in Industrial Woodworking Machinery Complete Liquidations, On-site & Online

TROYER AUCTION SERVICES

Dan Troyer

(PH) 330.749.9478 • (FAX) 330.778.002

Assisting Auctioneers:

Eli Troyer, James Mast & Bob Graber

Kratzer Woodworking Liquidation & Consignment Auction

Friday, August 12, 2016 • Starting at 10:00AM • Tractors Sell at Approximately 12:30PM

INDUSTRIAL WOODWORKING EQUIPMENT / LUMBER / ANTIQUE TRACTORS

Selling on site at: 12980 Arnold Rd, Dalton, OH 44618



LUMBER: 20 Bunks of Lumber, Approx. 15,000 Board Feet—Oak, Maple, Cherry, Hickory, Quarter Saw White Oak, Red Oak, Reclaimed Barn Wood, and more .



Farmall-C w/PTO & rear light



Farmall-H w/front end loader (not attached) PTO, lights, pulley & M&W live clutch



Farmall (Super MD), gas & diesel, PTO, lights, & pulley - VERY NICE



Farmall-H w/front end loader, PTO, lights, fenders & pulley (complete)



Farmall-A w/7' IH cycle mower, PTO & fenders



John Deere LA w/ one bottom plow (L-4000T)

ANTIQUÉ TRACTORS: Farmall-C Ser. #46787 Tractor; Farmall-H Ser. #24909 Tractor with Front End Loader and Manure and Dirt Bucket; Farmall-H Ser. #88259 Tractor with Front End Loader and Manure Bucket; Farmall-A Ser. #34532 Tractor with 7' International Cycle Mower, Made in 1939, Hand-Crank Start; Farmall-MD Diesel & Gas Tractor, Super Condition; Case SC Ser. #4502256 Tractor, 1941; John Deere LA Ser. #L-4000T (?), with One-Bottom Plow, Hand-Crank Start; Case VAC Ser. #5352580, 1946 Tractor; Cockshutt Tractor, Runs but Needs Work; John Deere 3-Point 6' Wide Heavy Duty Brush Hog; Woods 6-Foot Finish Mower, Part No. L306 (New); Single Bottom 14" Plow (Mounts on Farmall-A); 7' Undermount Cycle Mower (Mounts on Farmall Model M); Rototiller, 3-Point PTO Driven 6' Wide; 2-Bottom Plow (for Farmall-C). *These tractors have been in a heated building for the last 20 years, so they're in very good condition. Call Jerry @ 330-857-4167 for more information.*



1941 Case SC w/PTO & pulley



Farmall-H w/power steering, PTO & lights